

About Our Company

At EBS, our goal is to help our clients identify and solve wastewater treatment problems promptly and cost-effectively. Our holistic approach creates long-term solutions that help wastewater systems meet their compliance goals and avoid costly EPA fines.

EBS evaluates your entire system, determining what is needed. We provide a comprehensive selection of field and service options, as well as high-quality wastewater treatment solutions, chemical and microbiological evaluations, and treatability studies.

Why Choose Us?

- Quick response when you need us most.
- Advanced equipment is used to collect precise data.
- Our team collectively holds more than 300 years of experience in wastewater management.



An Employee-Owned Company
Comprehensive Wastewater Solutions

Scan the QR code below to learn more details about **EBS**



Our Core Values

- Respond at the Speed of Sound
- Simple, yet Profound
- Calm in the Storm
- No Fear
- Open Book
- Spread the Word



(985) 674-0660



1930 Surgi Drive, Mandeville, LA 70448



<https://www.ebsbiowizard.com/contact/>

Wastewater Operational Support

**Comprehensive
On-Site Services**



Industries We Serve

- Pulp & Paper
- Petrochemical
- Food and Beverage
- Oil and Gas
- Petroleum Refining
- Municipal

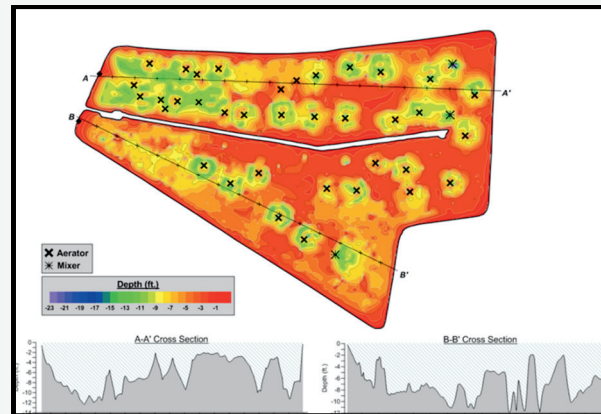
Aeration Basin Evaluations

- Depth surveys
- Aerial imagery
- Tracer studies
- Solids handling audits

On-Site Support

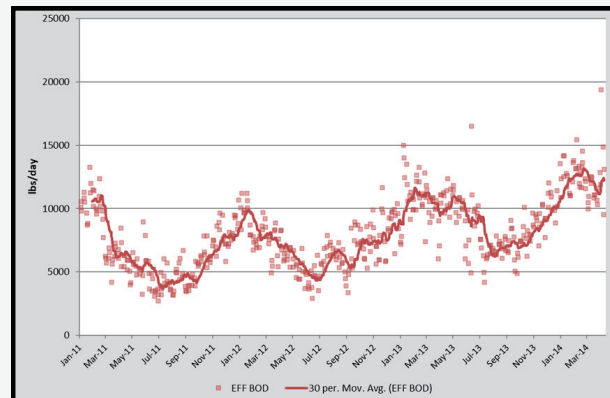
- Historical data review
- Customized training
- Focused consulting
- Outage or upset response
- Routine service visits

Bathymetry Map



Bathymetry map of treatment pond depth

Historical Data Review



Seasonal swings in BOD and performance loss over time

Our Approach

System evaluations provide valuable insights into the current operating conditions of a system. Our team can help identify the problem areas and help you achieve treatment optimization. From emergency upset response to long-term data collection, EBS can help you get the most out of your treatment system.

Our Advanced Technology



Drone surveys provide a unique view through thermal and high-resolution images.

Hydrographic surveys with USVs offer safe, effective, and accurate data collection.

